



Appendix A14.1
Scheme Walkover
Summary

Contents

Appendix A14.1: Scheme Walkover Summary	1
1.1 Introduction.....	1
1.2 Summary	2
1.3 Photos.....	4
1.4 References	24

Appendix A14.1 Scheme Walkover Summary

1.1 Introduction

The following is a summary of the observations by the Land, Soils, Geology and Hydrogeology Environmental Impact Assessment Team following a physical walkover of the scheme. The walkover occurred on the 5 February 2020, 9 July 2021 and 22 March 2023. The drawings used to determine the type and extent of proposed works and in turn to inform the site walkovers were the General Arrangement drawings which are contained in Volume 3 of the EIAR.

Not all observations have been included in this summary for conciseness. Typically, only observations that could not have been determined from the desk study and that are relevant to the Land, Soils, Geology and Hydrogeology Chapter have been included. The omission of an observation or a feature does not negate the feature's importance in terms of the Land, Soils, Geology and Hydrogeology environmental impact assessment.

The observations are summarised in Table 1 and the corresponding photos in Table 2 of this appendix.

1.2 Summary

Table 1: Scheme Walkover Summary

Observation	General Arrangement Drawing Sheet Number*	Description	Possible Impact	Photo Number
Potential works at Pinnock Hill roundabout	Sheet 01	Potential land acquisition is noted at this location. The existing roundabout is to be converted to a signalised junction. Minor level changes and earthworks may be required to facilitate the works.	This may pose an issue for the earthworks balance and waste assessment.	Swords_Image 01
Potential works at Airside Retail Park junction	Sheet 03	Potential land acquisition is noted at this location. Minor earthworks and level changes may be required to facilitate the works.	This may pose an issue for the earthworks balance and waste assessment.	Swords_Image 02
Potential works at adjacent Texaco petrol station along Swords Road	Sheet 03	Historic activities at petrol stations may have resulted in oil leaks into the surrounding soils and groundwater in the past.	This may pose an issue for the earthworks balance and waste assessment and mobilising contaminants into the groundwater.	Swords_Image 03
Potential construction compound location adjacent the Cloghran roundabout	Sheet 06	A potential construction compound is to be located at the Cloghran Roundabout. Topsoil strip, minor earthworks and level changes may be required to accommodate the works.	This may pose an issue for the earthworks balance and waste assessment.	Swords_Image 04
Potential works at the Swords Road near the Coachman's Inn	Sheet 07	Potential land acquisition is noted at this location. Minor earthworks and level changes may be required to facilitate the works.	This may pose an issue for the earthworks balance and waste assessment.	Swords_Image 05
Potential works at the Collinstown Cross Industrial Estate entrance	Sheet 12	The Proposed Scheme has the potential to interact old industrial units. Due to the land acquisition noted at this location, it is envisaged that it may be a potential source of contamination.	This may pose an issue for the earthworks balance and waste assessment and mobilising contaminants into the groundwater.	Swords_Image 06
Potential construction compound location at Collinstown Cross	Sheet 12	A potential construction compound is to be located at Collinstown Cross. Trees and soil mounds were noted at this location. The makeup of the mounds is unknown.	This may pose an issue for the earthworks balance and waste assessment.	Swords_Image 07
Potential works along Swords Road and potential interaction with second-hand car garage	Sheet 12	The Proposed Scheme has the potential to interact with a second-hand car garage. The site walkover identified a previous land use of a petrol station at this location. Due to the land acquisition noted at this location, it is envisaged that it may be a potential source of contamination.	This may pose an issue for the earthworks balance and waste assessment and mobilising contaminants into the groundwater.	Swords_Image 08
Potential works at along R132 and potential interaction with a derelict cottage.	Sheet 13	Potential land acquisition is noted at this location. It is likely that the derelict cottage will be removed and may result in minor level changes and earthworks to facilitate the works.	This may pose an issue for the earthworks balance and waste assessment. Buried structures may need removal.	Swords_Image 09
Dublin Airport Business Park junction	Sheet 15	Potential land acquisition is noted at either side of the junction. Minor level	This may pose an issue for the earthworks	Swords_Image 10

Observation	General Arrangement Drawing Sheet Number*	Description	Possible Impact	Photo Number
		changes and earthworks may be required to facilitate the works.	balance and waste assessment.	
Potential works along Swords Road showing significant level changes.	Sheet 16	The walkover confirmed a level change between the existing carriageway and neighbouring units. A slope embankment was also identified at this location. Level changes and earthworks may be required to facilitate the works.	This may pose an issue for the earthworks balance and waste assessment. Any road alterations or widening may result in the instability of this slope.	Swords_Image 11
Potential works along Swords Road and potential interaction with residential housing	Sheet 17	Potential land acquisition at this location. It may result in the removal of walls and minor level changes to accommodate the works.	This may pose an issue for the earthworks balance and waste assessment.	Swords_Image 12
Potential construction compound location at Coolock Lane	Sheet 18	A potential construction compound is to be located at Coolock Lane. Minor level changes and mature trees were noted within the green area. Minor earthworks are likely to be required to accommodate the works.	This may pose an issue for the earthworks balance and waste assessment.	Swords_Image 13
Potential works at Lorcan Road and Swords Road junction	Sheet 20	Potential land acquisition is noted at this location. Minor level changes and earthworks may be required to facilitate the works.	This may pose an issue for the earthworks balance and waste assessment.	Swords_Image 14
Potential works at Shanrath Road for a proposed offline cycle track location	Sheet 22	Potential land acquisition is noted at this location. Minor level changes and earthworks may be required to facilitate the works.	This may pose an issue for the earthworks balance and waste assessment.	Swords_Image 15
Potential works at Whitehall Church carpark	Sheet 24	The Proposed Scheme has highlighted land acquisition at this location. It may result in the removal of walls and minor level changes to accommodate the works.	This may pose an issue for the earthworks balance and waste assessment.	Swords_Image 16
Potential construction compound location at Collins Avenue	Sheet 25	A potential construction compound is to be located at Collins Avenue. This site is situated in a hard standing area.	This may pose an issue for the earthworks balance and waste assessment.	Swords_Image 17
Potential land acquisition and minor level changes outside Bonnington Hotel	Sheet 27	Potential land acquisition is noted at this location. Minor level changes and earthworks may be required to facilitate the works.	This may pose an issue for the earthworks balance and waste assessment.	Swords_Image 18
Potential construction compound location at Drumcondra Bridge	Sheet 31	A potential construction compound is to be located at Drumcondra Bridge. The site is situated within a local riverside park with mature trees, protected structures, and low-rise building.	This may pose an issue for the earthworks balance and waste assessment.	Swords_Image 19
Proposed pedestrian/cycle bridge at Drumcondra Bridge	Sheet 31	A proposed pedestrian/cycle bridge is to be located at Drumcondra Bridge. The site is situated within a local riverside park with mature trees, protected structures, and low-rise building.	This may pose an issue for the earthworks balance and waste assessment.	Swords_Image 20

1.3 Photos

Table 2: Scheme Walkover Photos

Photo ID	Caption	Date Taken	Coordinates
Swords_Image 01	Image of Pinnock Hill roundabout – Existing roundabout to be converted to a signalized junction	22/03/2023	717868, 745861 (ITM)



Key plan


 Circle denotes approximate location of photo
 with triangle denoting approximate direction of photo



Photo ID	Caption	Date Taken	Coordinates
Swords_Image 02	Potential land acquisition at Airside Retail Park junction	22/03/2023	717712, 745340 (ITM)



Key plan



 Circle denotes approximate location of photo
 with triangle denoting approximate direction of photo



Photo ID	Caption	Date Taken	Coordinates
Swords_Image 03	Potential land acquisition adjacent Texaco petrol station along Swords Road.	22/03/2023	717699, 745141 (ITM)



Key plan

 Circle denotes approximate location of photo
 with triangle denoting approximate direction of photo

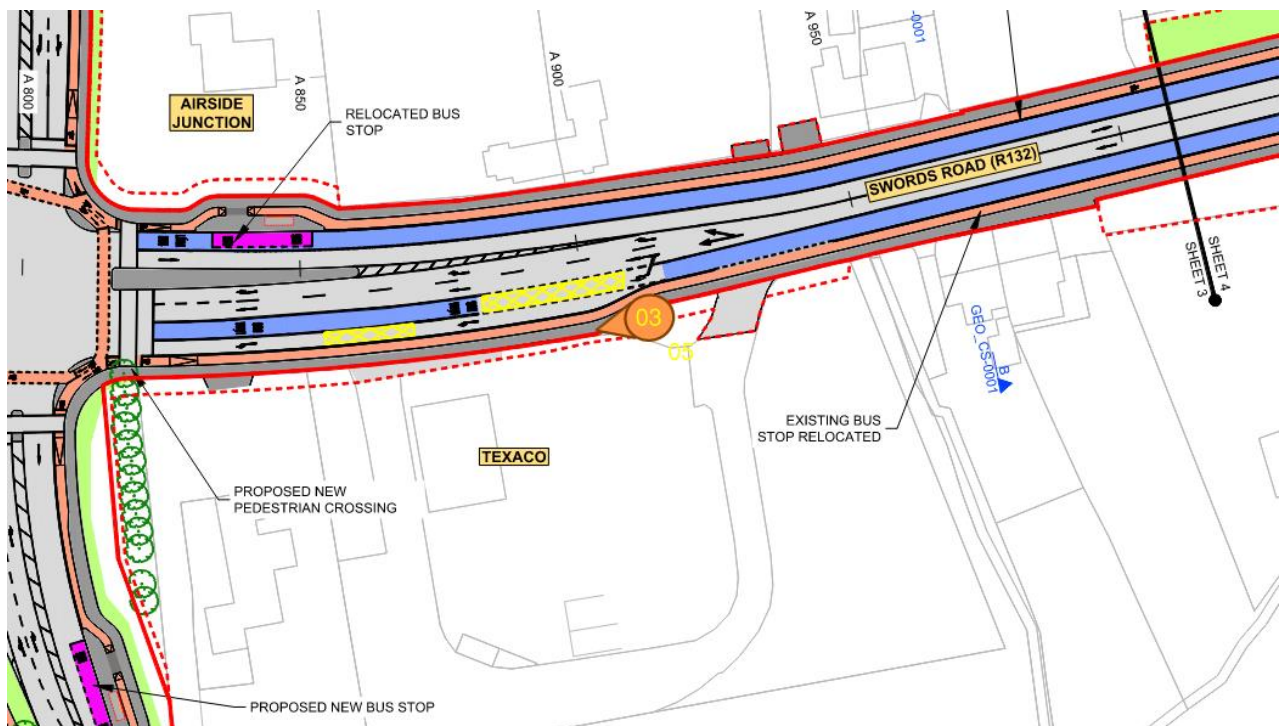



Photo ID	Caption	Date Taken	Coordinates
Swords_Image 04	Potential construction compound location adjacent the Cloghran roundabout.	22/03/2023	717721, 744142 (ITM)



Key plan

 Circle denotes approximate location of photo with triangle denoting approximate direction of photo

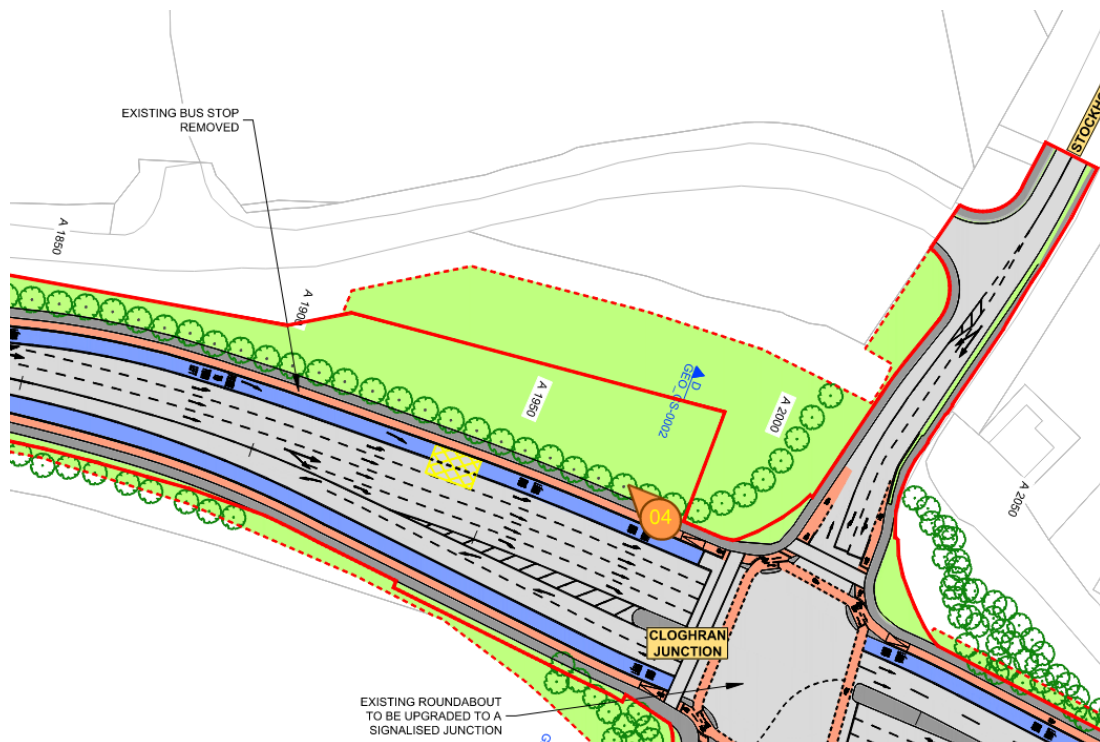

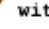


Photo ID	Caption	Date Taken	Coordinates
Swords_Image 05	Potential land acquisition along the Swords Road near the Coachman's Inn.	22/03/2023	717646, 743972 (ITM)



Key plan

 Circle denotes approximate location of photo
 with triangle denoting approximate direction of photo

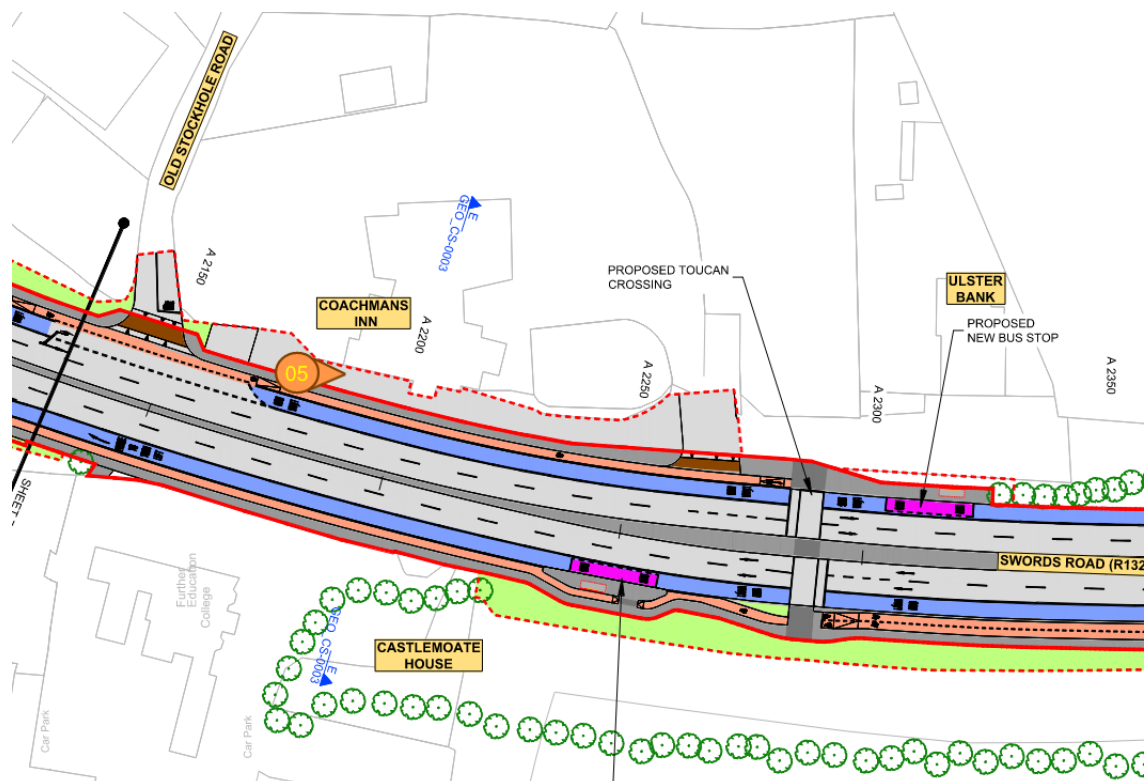




Photo ID	Caption	Date Taken	Coordinates
Swords_Image 06	Potential land acquisition at the Collinstown Cross Industrial Estate entrance.	22/03/2023	717075, 742242 (ITM)



Key plan

 Circle denotes approximate location of photo
 Triangle denoting approximate direction of photo

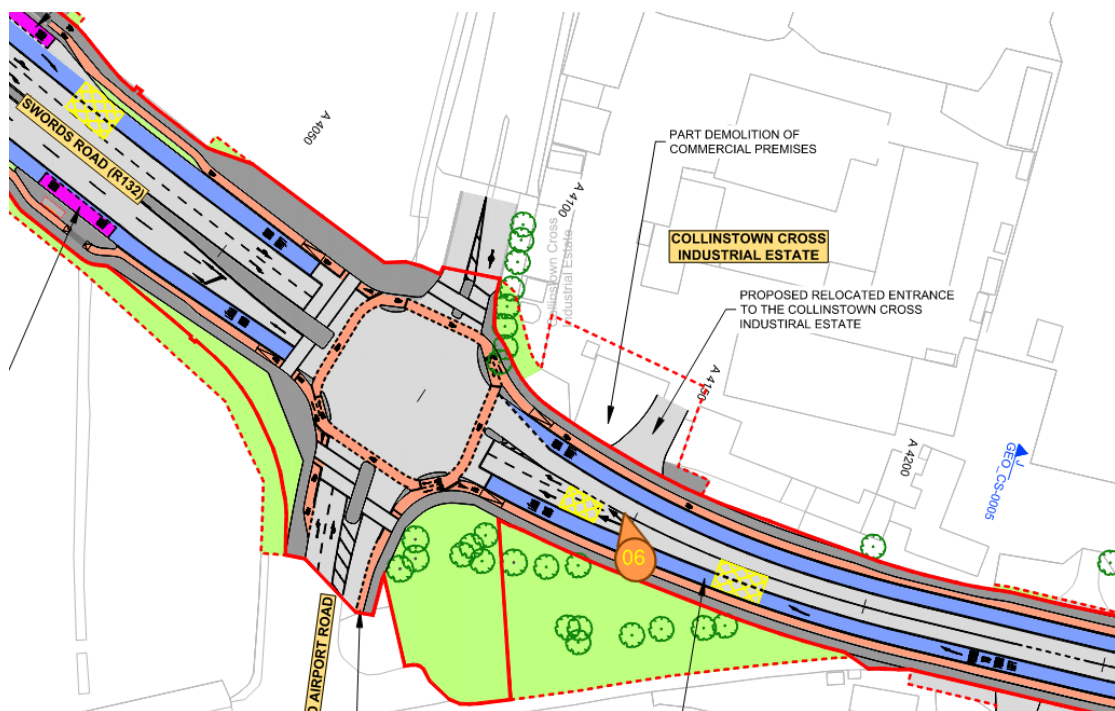


Photo ID	Caption	Date Taken	Coordinates
Swords_Image 07	Potential construction compound location at Collinstown Cross.	22/03/2023	717076, 742259 (ITM)



Key plan


 Circle denotes approximate location of photo
 with triangle denoting approximate direction of photo



Photo ID	Caption	Date Taken	Coordinates
Swords_Image 08	Potential land acquisition along Swords Road and potential interaction with second-hand car garage.	22/03/2023	717032, 742066 (ITM)



Key plan



Circle denotes approximate location of photo
 with triangle denoting approximate direction of photo

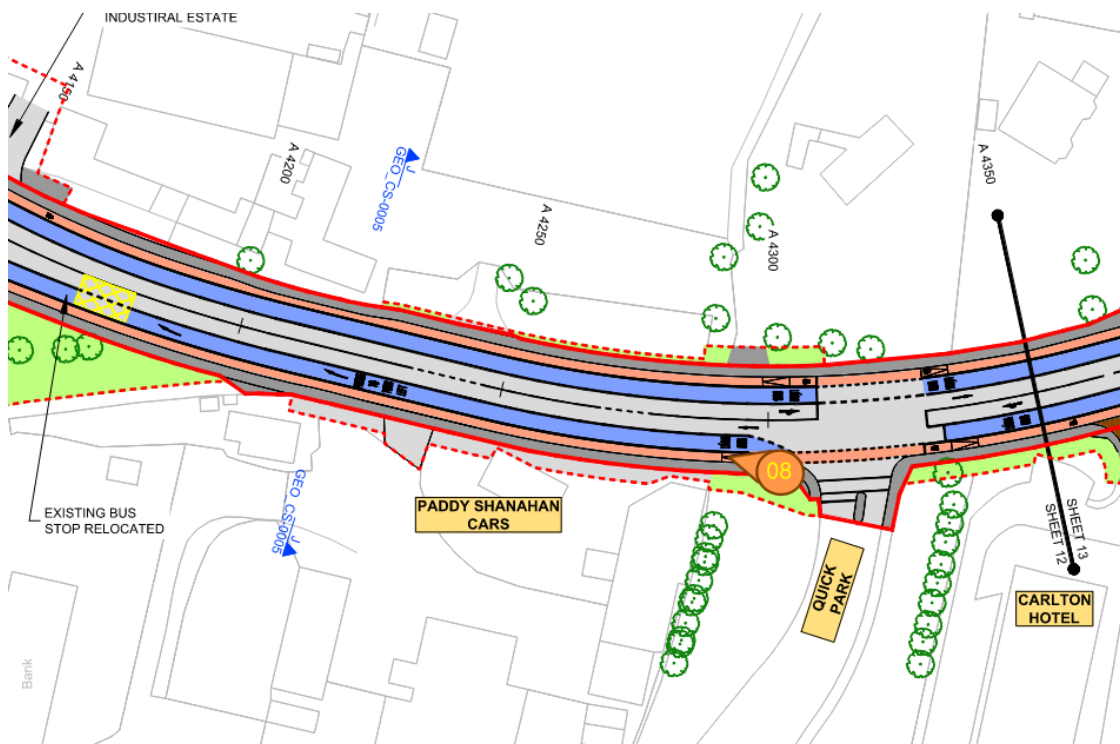




Photo ID	Caption	Date Taken	Coordinates
Swords_Image 09	Potential land acquisition along R132 and location of derelict cottage.	22/03/2023	717063, 741804 (ITM)



Key plan

 Circle denotes approximate location of photo
 with triangle denoting approximate direction of photo

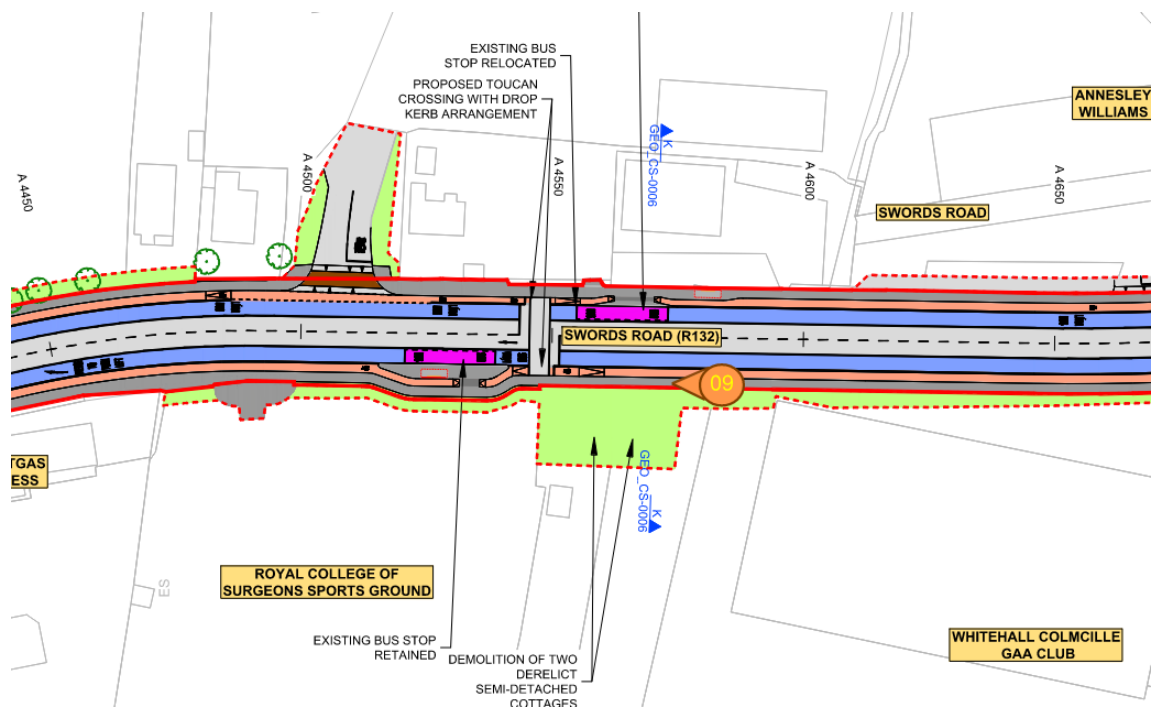


Photo ID	Caption	Date Taken	Coordinates
Swords_Image 10	Image of junction at Dublin Airport Business Park.	22/03/2023	717157, 741172 (ITM)



Key plan

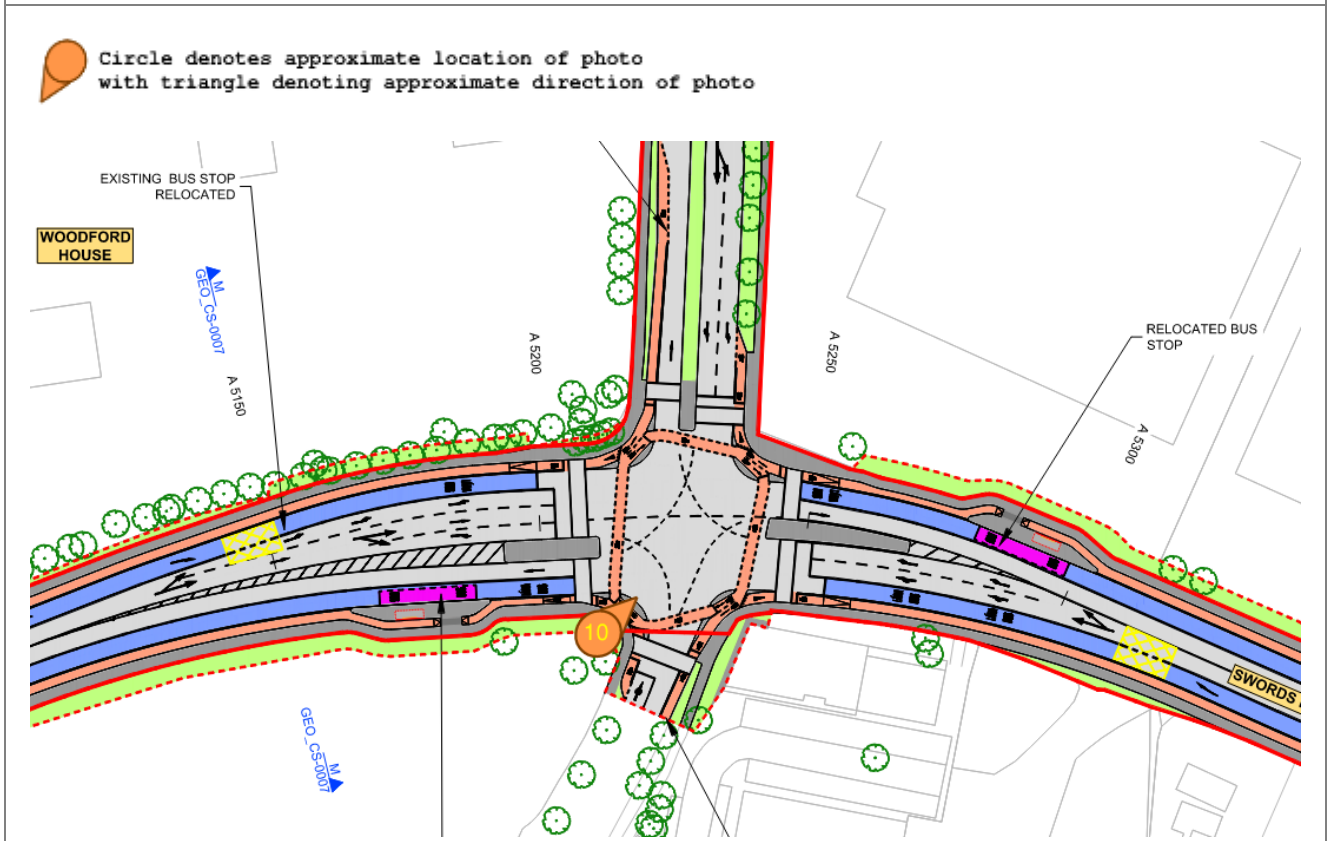



Photo ID	Caption	Date Taken	Coordinates
Swords_Image 11	Potential land acquisition along Swords Road showing significant level changes.	22/03/2023	717050, 740869 (ITM)



Key plan

 Circle denotes approximate location of photo
 with triangle denoting approximate direction of photo

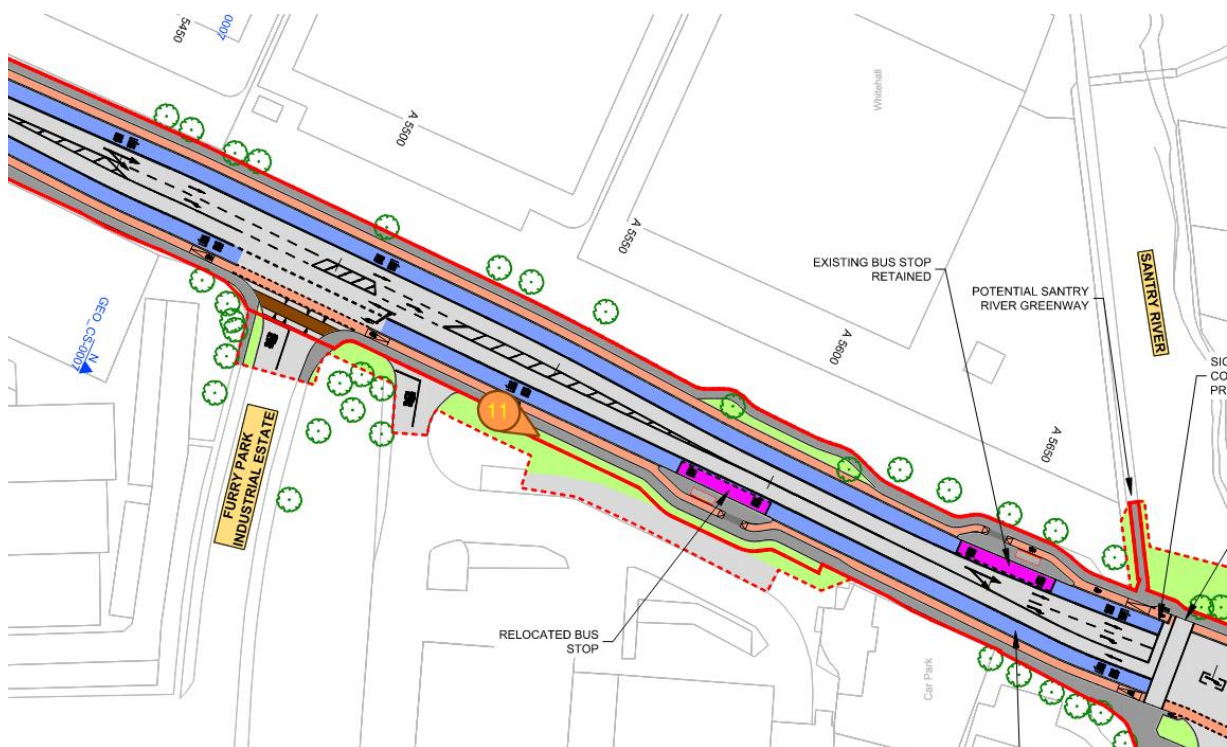


Photo ID	Caption	Date Taken	Coordinates
Swords_Image 12	Potential land acquisition along Swords Road and potential interaction with residential housing	22/03/2023	716967, 740622 (ITM)



Key plan

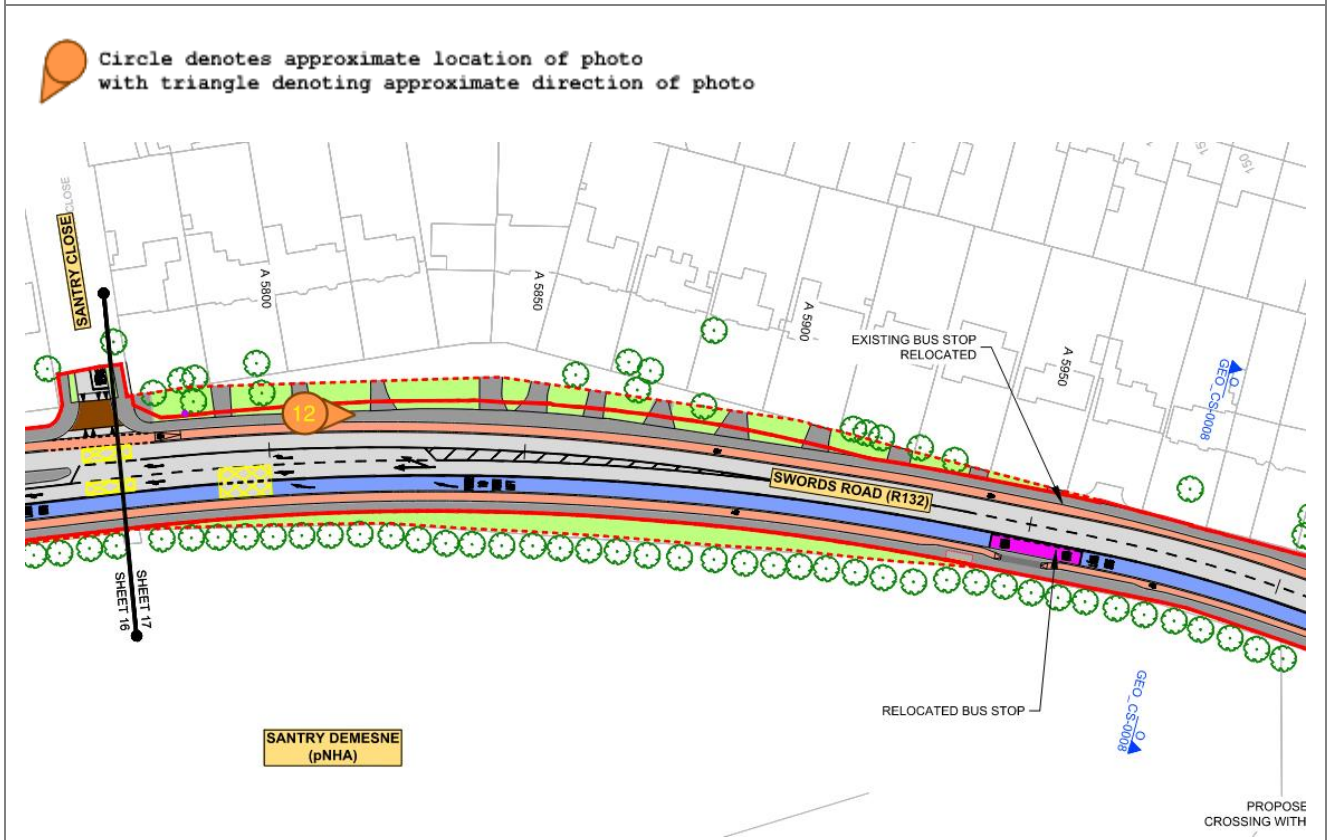



Photo ID	Caption	Date Taken	Coordinates
Swords_Image 13	Potential construction compound location at Coolock Lane.	22/03/2023	716800, 740154 (ITM)



Key plan

 Circle denotes approximate location of photo
 with triangle denoting approximate direction of photo

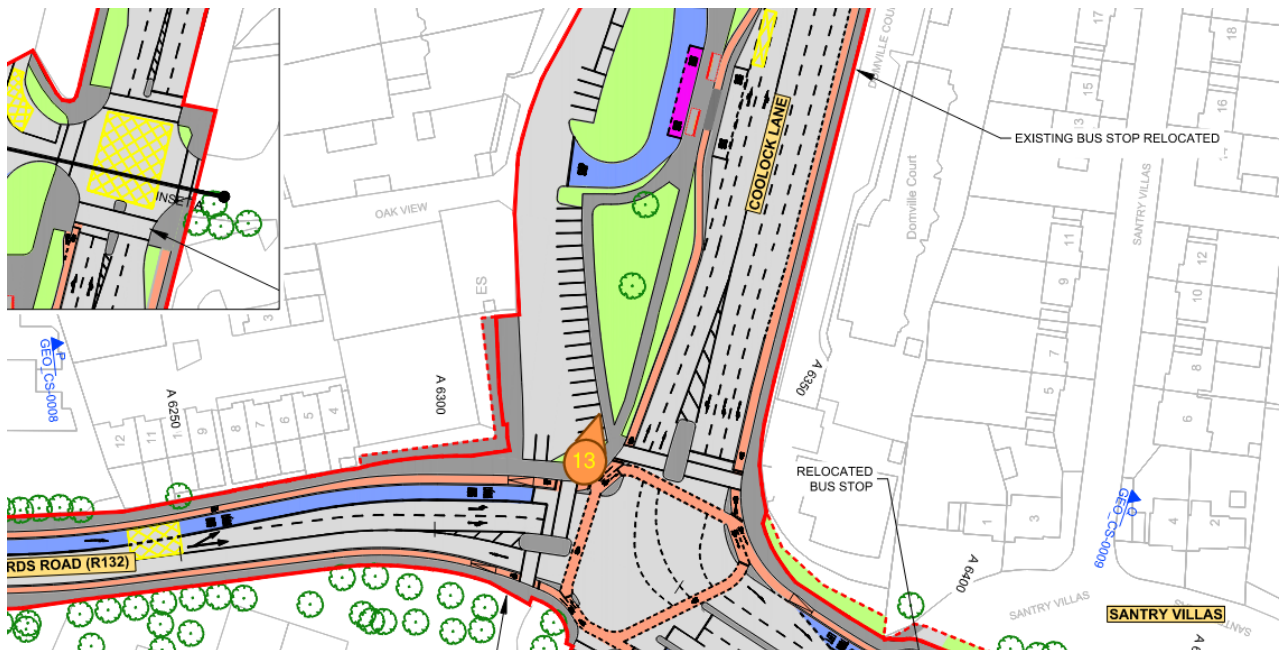




Photo ID	Caption	Date Taken	Coordinates
Swords_Image 14	Potential land acquisition at Lorcan Road and Swords Road junction	22/03/2023	716676, 739511 (ITM)



Key plan

 Circle denotes approximate location of photo
 with triangle denoting approximate direction of photo

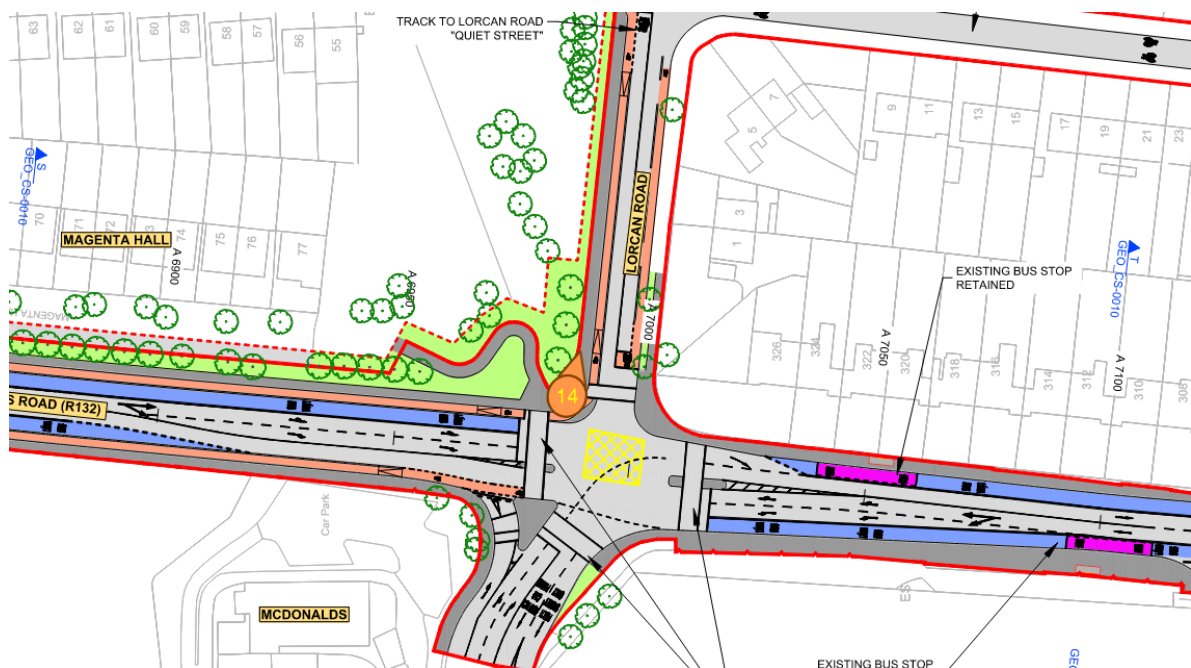



Photo ID	Caption	Date Taken	Coordinates
Swords_Image 15	Potential land acquisition at Shanrath Road for a proposed offline cycle track location.	22/03/2023	716844, 738989 (ITM)



Key plan

 Circle denotes approximate location of photo with triangle denoting approximate direction of photo

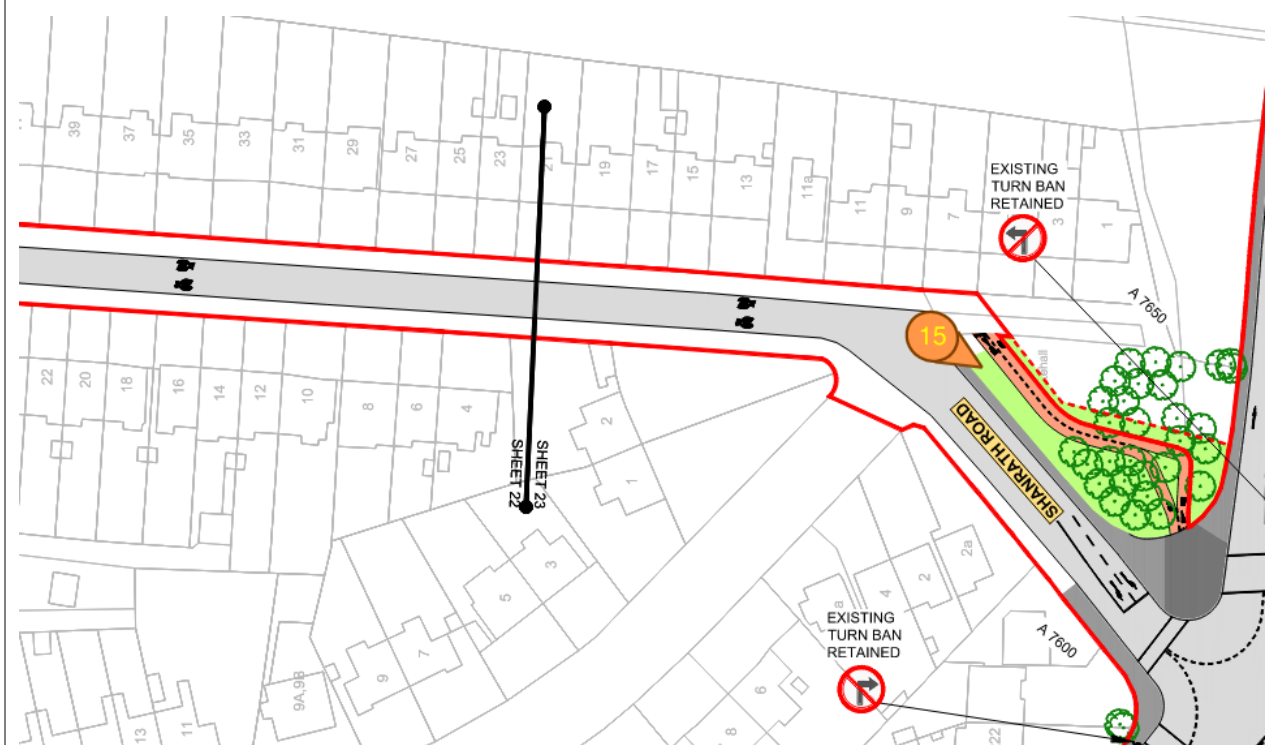

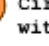


Photo ID	Caption	Date Taken	Coordinates
Swords_Image 16	Potential land acquisition at Whitehall Church carpark.	22/03/2023	716855, 738519 (ITM)



Key plan

 Circle denotes approximate location of photo
 with triangle denoting approximate direction of photo

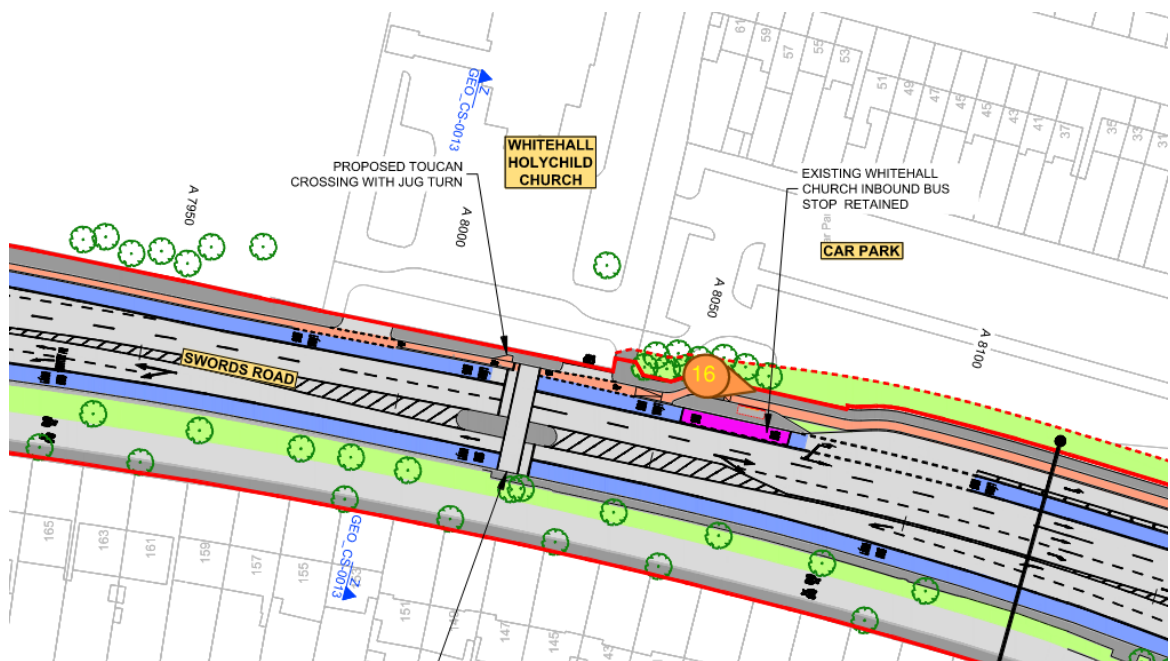



Photo ID	Caption	Date Taken	Coordinates
Swords_Image 17	Potential construction compound location at Collins Avenue.	22/03/2023	716881, 738297 (ITM)



Key plan

 Circle denotes approximate location of photo
 with triangle denoting approximate direction of photo

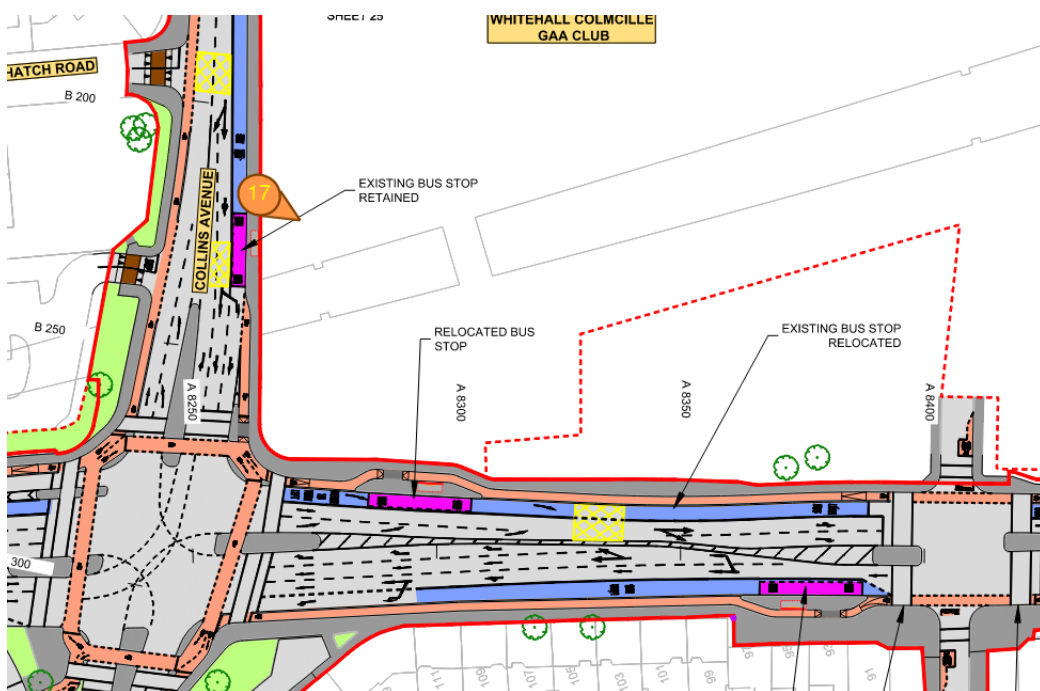



Photo ID	Caption	Date Taken	Coordinates
Swords_Image 18	Potential land acquisition and minor level changes outside Bonnington Hotel	22/03/2023	716583, 737853 (ITM)



Key plan

 Circle denotes approximate location of photo with triangle denoting approximate direction of photo

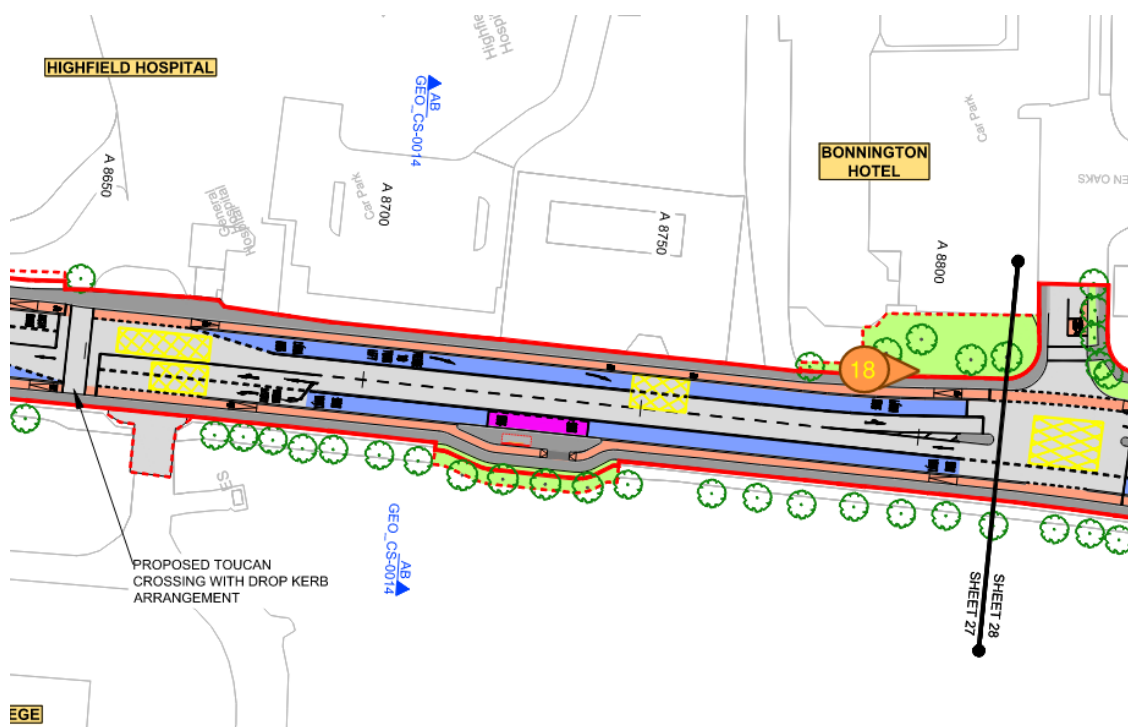




Photo ID	Caption	Date Taken	Coordinates
Swords_Image 19	Potential construction compound location at Drumcondra Bridge.	22/03/2023	716048, 736710 (ITM)



Key plan

 Circle denotes approximate location of photo
 with triangle denoting approximate direction of photo

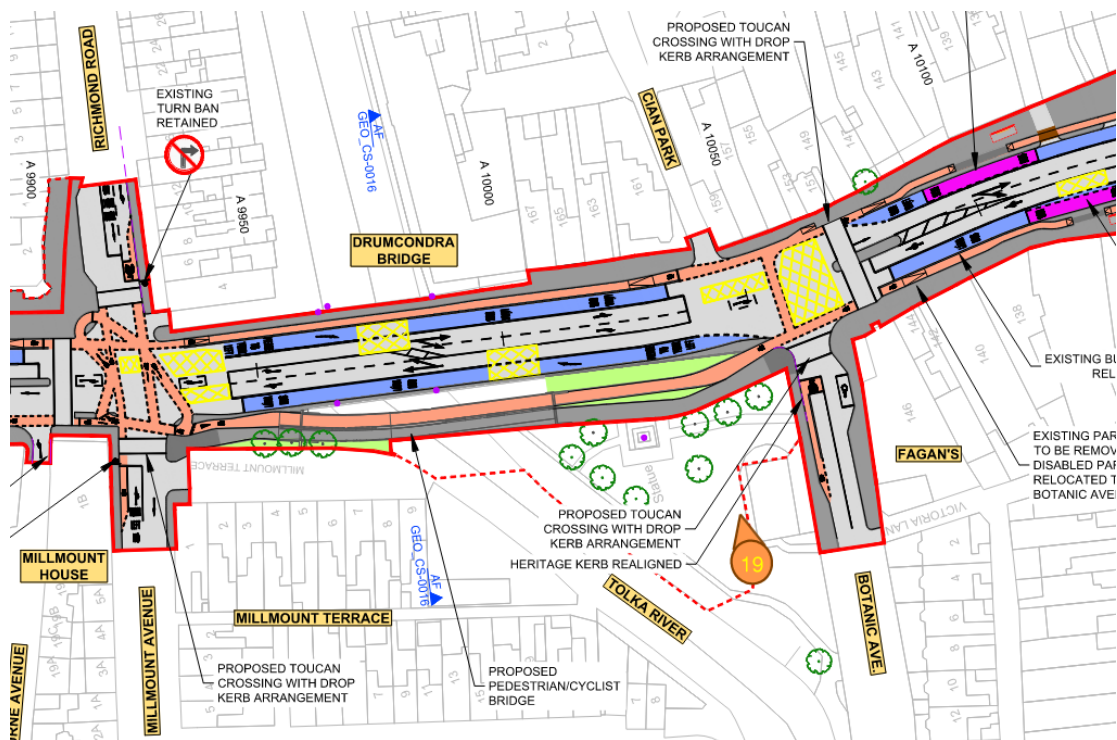

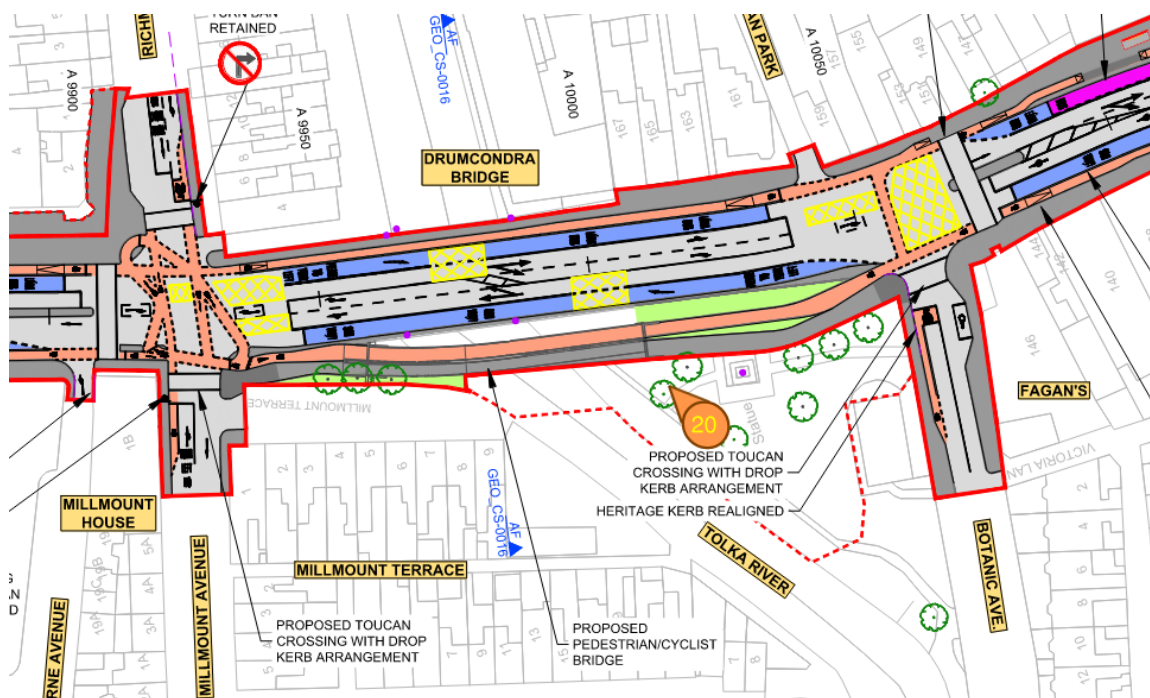


Photo ID	Caption	Date Taken	Coordinates
Swords_Image 20	Image of Drumcondra Bridge.	22/03/2023	716084, 736726 (ITM)



Key plan

 Circle denotes approximate location of photo
 with triangle denoting approximate direction of photo



1.4 References

None.